

# PNEUMATIC VALVES | General Purpose

## BC 1/4" Base Mounted Valves

### BC Series

- 5 port valves - mechanical, air and solenoid
- Port size : 1/4" BSP
- Can be used as an independent valve or installed on a manifold.

### Technical Data

Fluid	Air / Inert gas
Operation pressure	1.5 to 10 bar
Ambient temperature	-5° to 55° C (option for FKM seals) up to 150° C
Lubrication	Not required (use turbine oil class ISO VG32 if lubricated)
Port size	1/4" BSP
Flow rate (Air)	1,100 L/min (at 5.5 bar)



Position Stable Lever Protec 3



Sol-Sol



Air-Air



Single Base Mounted type  
Bottom Ported

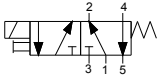


Manifold

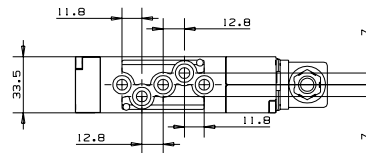
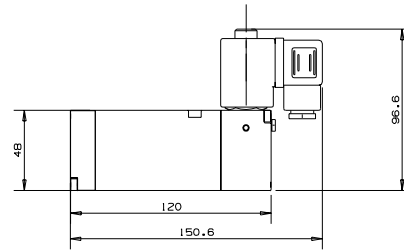
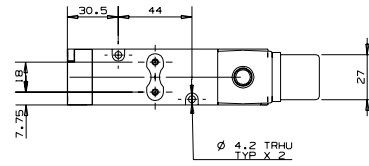
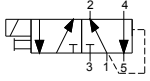
# PNEUMATIC VALVES | General Purpose

## BC 1/4" Base Mounted Valves | Solenoid Operated

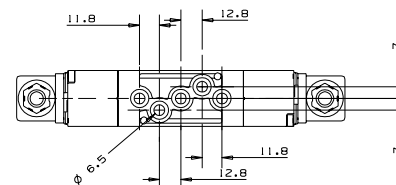
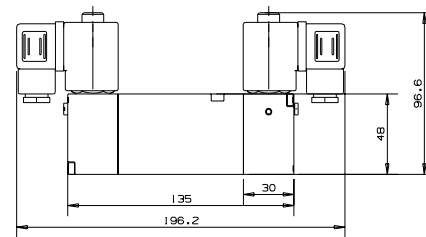
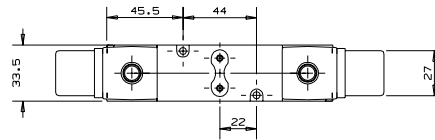
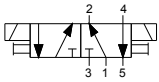
### KBCS5-S | Sol-Spring Return



### KBCS5-DF | Sol-Differential



### KBCS5-D | Sol-Sol



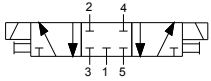
### How to Order

KBCS5	TYPE	MANUAL OVERRIDE	COIL VOLTAGE	POWER	CONNECTOR	
	Sol-Spring <b>S</b>	None	0	without 0	without 0	
	Sol-Dif <b>DF</b>	Plastic	1	6	1	
	Sol-Sol <b>D</b>	Brass slot	2 <sup>(1)</sup>	12	2	AC 8W50Hz
		non-locking	3 <sup>(1)</sup>	24	3	AC 8W60Hz
		St.st knob	4 <sup>(1)</sup>	48	4	DC 10W
		locking	5 <sup>(1)</sup>	110	5	DC 10W
		St.st knob	6 <sup>(1)</sup>	120	6	
			7	230	7	
			8	240	8	
			9	other	9	

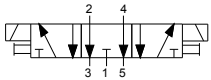
(1) Special order

# BC 1/4" Base Mounted Valves | Solenoid Operated

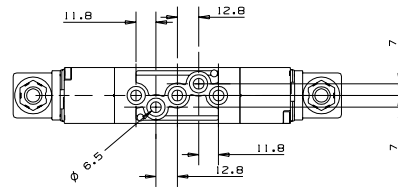
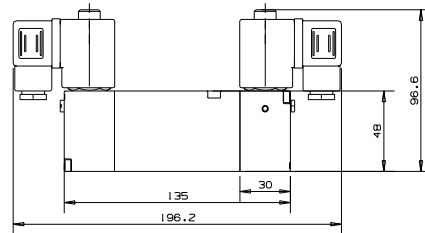
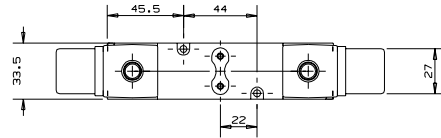
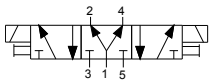
## KBCS53-P | 3 Position Closed Center Sol-Sol



## KBCS53-U | 3 Position Exhaust Center Sol-Sol



## KBCS53-Y | 3 Position Pressure Center Sol-Sol

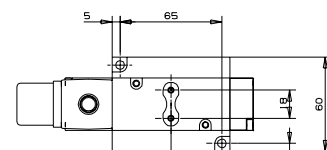
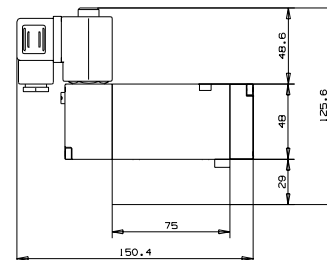
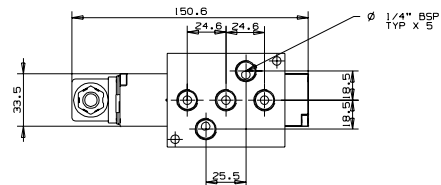


### How to Order

KBCS53	FUNCTION	MANUAL OVERRIDE	COIL VOLTAGE	POWER	CONNECTOR
	Closed Center <b>P</b>	None	0	without	0
		Plastic	1	6	1
	Exhaust Center <b>U</b>	Brass slot	2 <sup>(1)</sup>	12	2
		non-locking	3 <sup>(1)</sup>	24	3
	Pressure Center <b>Y</b>	St.st knob	4	48	4
		locking	5	110	5
		St.st knob	4 <sup>(1)</sup>	120	6
				230	7
				240	8
				other	9

(1) Special order

## BB | Single Base Mounted type Bottom Ported



### How to Order

BB

\* Model is for demonstration purposes only  
 \*\* All combinations of valves are available

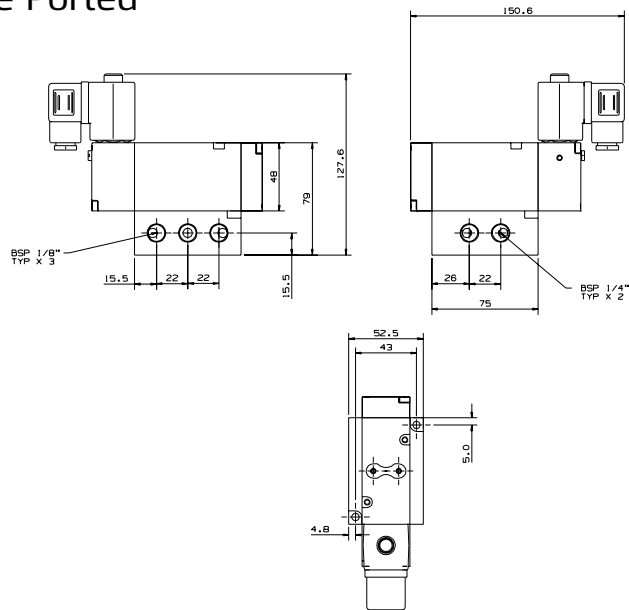
# PNEUMATIC VALVES | General Purpose

## BC 1/4" Base Mounted Valves | Mechanical/Air/Solenoid Operated

### BS | Single Base Mounted type | Side Ported



\* Model is for demonstration purposes only  
\*\* All combinations of valves are available

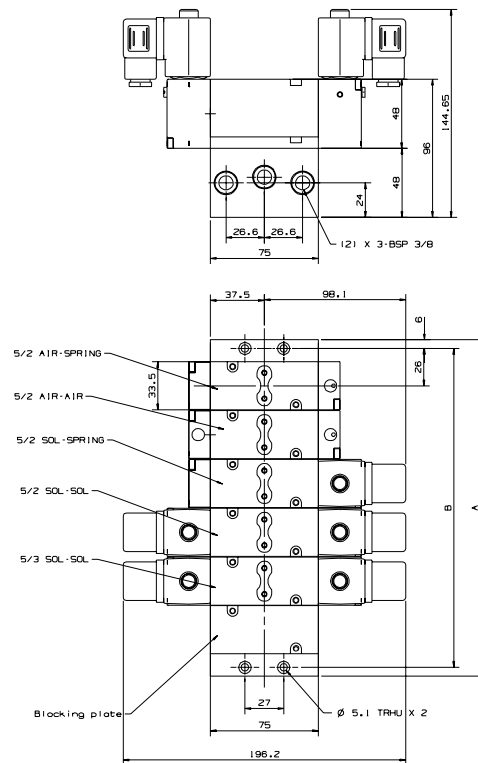
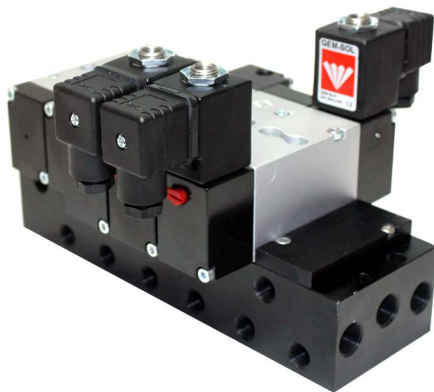


#### How to Order

BS

### BC-BM | Manifold

No. of sections : 2-4-6-8-10-11



#### How to Order

BC	-	BM	-	No. OF STATIONS
				2
				4
				6
				8
				10
				11

No. of stations	A (mm)	B (mm)
2	98	86
4	166	154
6	234	222
8	302	290
10	370	358
11	404	392