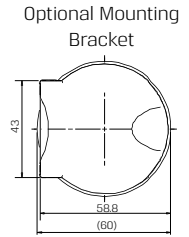
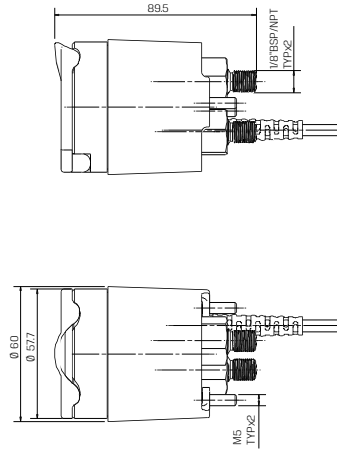
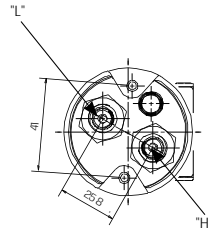


# CONTROLLERS & SPECIAL VALVES

## G75-DP | Baccara Differential Pressure Gauge Switch



- Reads and reacts to pressure differential between two reading points
- Suitable to work with both media - air and liquid
- Main applications : filters backwash, pumps control, pressure control

### Technical Data

Mechanical	<ul style="list-style-type: none"> <li>• Operating temperature : -10°C to 60°C (no freezing)</li> <li>• Outdoor UV protection</li> <li>• Front panel cover protection</li> <li>• "H" proof pressure : 14 bar (203 PSI)</li> <li>• "H" pressure must be <math>\geq</math> "L" pressure.</li> </ul>
Electrical	<ul style="list-style-type: none"> <li>• Power supply : 6-24V DC or 12-24V AC</li> <li>• RED + BLK power supply</li> <li>• GRN / WHT N.O contact</li> <li>• Low power detect</li> <li>• Dry contact (N.O) 0.5A at 24V AC</li> <li>• Internal memory to retain "set-up data" at power down.</li> </ul>
Mounting	<ul style="list-style-type: none"> <li>• 2" (52mm) diameter</li> <li>• 2ft (60cm) 4 wires cable</li> <li>• Pressure ports 1/8" BSP/NPT (male)</li> <li>• High pressure port is marked by the letter "H" on the housing</li> <li>• Connect high pressure before low pressure</li> <li>• Disconnect low pressure before high pressure</li> </ul>
Software	See 'Programming key features' table
Display	<p><b>The LCD display :</b></p> <ul style="list-style-type: none"> <li>• <b>DIF</b> : measured differential pressure</li> <li>• <b>SET</b> : pressure differential trigger setting</li> <li>• <b>ON</b> : displayed when the switch contacts are closed</li> </ul> <p><b>Display resolution :</b></p> <ul style="list-style-type: none"> <li>1 PSI in the range 0 - 99 psi</li> <li>0.1 bar in the range 0.0 - 7 bar</li> </ul>
Standard protection class	<ul style="list-style-type: none"> <li>• Dust and watertight</li> <li>• IP66</li> </ul>

### Programming key features

Manual operation
PSI or bar display
Time interval between pressure measurements
Contact closed time
Time interval between contact closure
Zero calibration

### How to Order

G75-DP	-	TYPE	ACCESSORIES
		Stand alone	1
		Mounting bracket	B

#### Example : G75-DP-1B

Baccara Differential Pressure Gauge Switch, stand alone with mounting bracket

G75-DP	-	1	B
--------	---	---	---

\* To order special valves manufactured according to your specific requirements, please contact our technical sales department