

SOLENOID VALVES | Special Purpose

Plastic

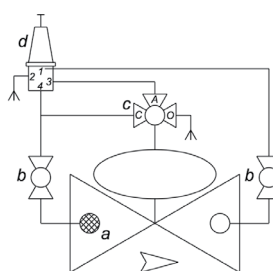
G75-PR | Pressure reducing 3/4" - 2" NC



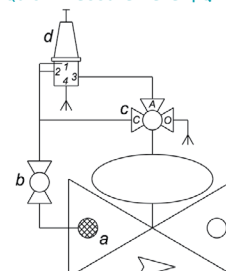
Main Components

	DESCRIPTION
a	Self flushing filter
b	Isolation ball valve (optional)
c	3W Manual selector valve
d	Multi-functional pilot valve

Pressure Reducing | PR



Pressure Sustaining | PS Quick Pressure Relief | QR



Technical Data

Solenoid	Supplied with 3W NO 1.2mm G75 operator
Assembly	Supplied with finger filter
Manual override	The XR100 has a manual override with 3 positions : <ul style="list-style-type: none"> • AUTO - for automatic operation (valve is open when solenoid is energized) • MANUAL - valve is kept open • CLOSE - valve is kept closed
Pressure	<ul style="list-style-type: none"> • Pilot pressure must be equal to, or higher than line pressure • A minimum pressure differential of 1 bar is required

• For technical information, refer to G75-S | Electric 3/4" - 2" 2 Way NC

Voltage & Power Consumption

V	AC (W)	
	50 Hz	DC (W)
12	•	•
24	•	•

• Available options

Coil resistance vs input voltage range

Resistance [Ω]	Suitable input voltage range [V]
4	6 - 9
9	12 - 14
12	14 - 16
23	18 - 21

How to Order

G75-PR	-	PORT	FUNCTION	FLOW CONTROL	VOLTAGE ⁽³⁾	WIRES	PRESSURE RANGE
		3/4" BSPT 50	2W NC 1	with 5	No solenoid (hydraulic) 0	two null	0.5-5 bar Y
		3/4" NPT 51		without ⁽¹⁾ 6	24V AC 1	three ⁽²⁾ a	1-10 bar G
		1" BSPT 60			24V AC w/out Diode 1R		
		1" NPT 61			12V AC 3		
		1-1/2" BSPT 70			12V DC 4		
		1-1/2" NPT 71			24V DC 5		
		2" BSPT 80			23Ω 6		
		2" NPT 81			4Ω B		
					9Ω C		
					12Ω D		

Example : G75-PR-70151Y

G75 pressure reducing valve, 1-1/2" BSPT, 2W NC with flow control, 24V AC, two wires, 0.5-5 bar

G75-PR - 70 - 1 - 5 - 1 - Y

(1) For 3/4", 1" valves only

(2) For Latch only

(3) For Latch : Refer to coil resistance vs input voltage table

* To order valves manufactured according to your specific requirements, please contact our technical sales department.