

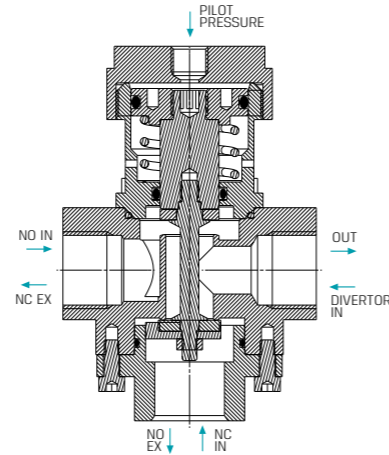
# PROCESS VALVES

Globe | Metal

GC | General purpose 1/4" - 1/2" 3 Way



1/2" | General purpose

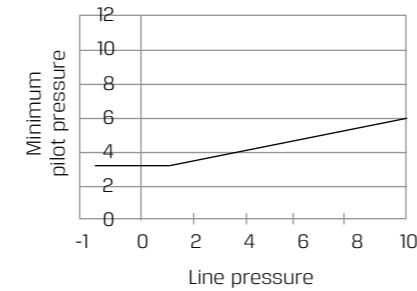


## Technical Data

Function	3 Way
Ports size	1/4", 3/8", 1/2" BSP & NPT
Pressure range	See table
Temperature range	<b>Fluid</b> : -5°C to 60°C (no freezing) <b>Ambient</b> : -10°C to 50°C
Materials in contact with media	<b>Main Valve:</b> Brass <b>Seals seat:</b> NBR, FPM (Viton®), EPDM

## Pressure (bar) & Flow table

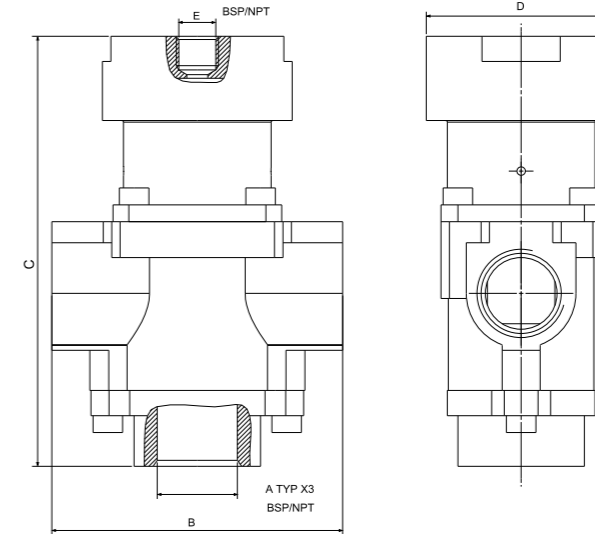
Size	Orifice (mm)	Line Pressure
1/4"	8	Vacuum - 10 bar
3/8", 1/2"	12	Vacuum - 10 bar



Globe | Metal | GC | General purpose 1/4" - 1/2" 3 Way

## Dimensions

Size	A	B	C	D	E
1/4"	1/4"	60	90	34	1/8"
3/8", 1/2"	3/8", 1/2"	70	100	45	1/8"



## How to Order

GC	BODY	PORT	FUNCTION	SEALS
	Brass	2	General purpose	9
		1/4"BSP		20
		1/4"NPT		21
		3/8"BSP		30
		3/8"NPT		31
		1/2"BSP		40
		1/2"NPT		41
			NBR	N
			FPM (Viton®)	V
			EPDM	E

Example : GC-2209N

GC cylinder, brass body, 1/4"BSP, 3W with NBR seals.

GC - 2 20 9 N

\* To order valves manufactured according to your specific requirements, please contact our technical sales department.