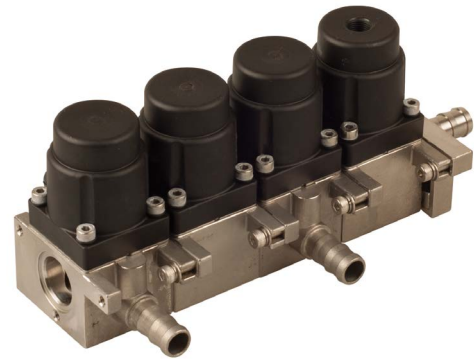


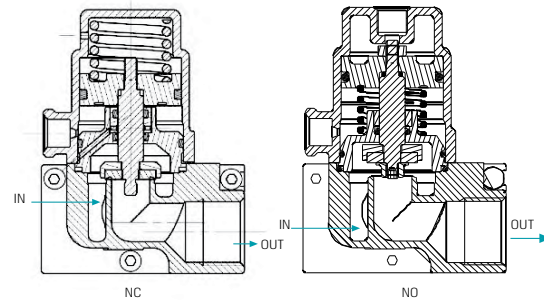
# PROCESS VALVES

Globe | Manifold

GC-SM | Stackable manifold 1/4", 1/2" 2 Way NC, NO



4 stations | Stainless Steel

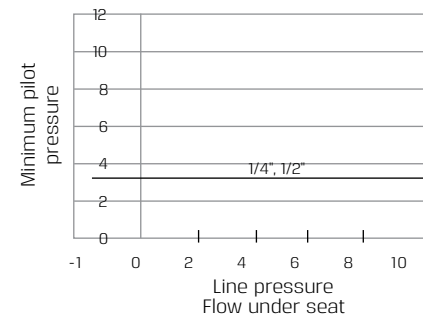
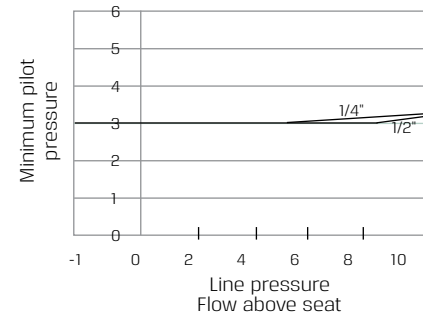


## Technical Data

Function	2 Way NC, NO
Ports size	1/4", 1/2" BSP & NPT
Pressure range	See table
Temperature range	<b>Fluid</b> : -5°C to 60°C (no freezing) <b>Ambient</b> : -10°C to 50°C
Materials in contact with media	<b>Main Valve:</b> Brass or Stainless Steel AISI 316 <b>Seals:</b> NBR, FPM (Viton®), EPDM

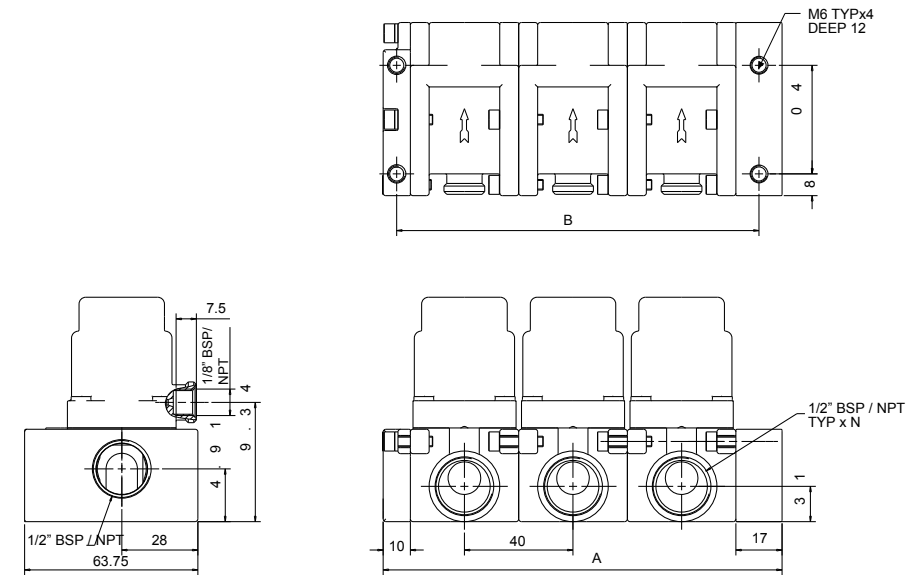
## Pressure (bar) & Flow table

Size	Orifice (mm)	Line Pressure
1/4"	8	Vacuum - 10 bar
1/2"	12	Vacuum - 10 bar



Globe | Manifold | GC | Stackable 1/4", 1/2" 2 Way NC, NO

## Dimensions



A	B
27+40xN	13.5+40xN

N = number of stations

## How to Order

GC-SM	No. of STATIONS	BODY	PORT	FUNCTION	SEALS
specify quantity	Brass 2	1/4"BSP <sup>(1)</sup>	20	2W NC	1 NBR N
	Stainless Steel 3	1/4"NPT <sup>(1)</sup>	21	2W NC bidirectional	1a FPM (Viton®) V
		1/2"BSP	40	2W NO	2 EPDM E
		1/2"NPT	41		

**Example : GC-SM-02260-1N**  
GC Globe cylinder operated stackable,  
2 station, brass body, 1"BSP, 2W NC, NBR seals.

GC-SM - 02 2 60 - 1 N

(1) Only available in brass

\* To order manifolds manufactured according to your specific requirements, please contact our technical sales department.