

PNEUMATIC VALVES | General Purpose

BC 1/4" Base Mounted Valves

BC Series

- 5 port valves - mechanical, air and solenoid
- Port size : 1/4" BSP
- Can be used as an independent valve or installed on a manifold.



3 Position Stable Lever Protec



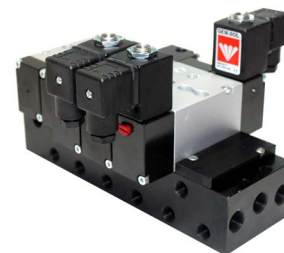
Sol-Sol



Air-Air



Single Base Mounted type
Bottom Ported



Manifold

Technical Data

Fluid	Air / Inert gas
Operation pressure	1.5 to 10 bar
Ambient temperature	-5° to 55° C (option for FPM [Viton®] seals) up to 150° C
Lubrication	Not required (use turbine oil class ISO VG32 if lubricated)
Port size	1/4" BSP
Flow rate (Air)	1,100 L/min (at 5.5 bar)

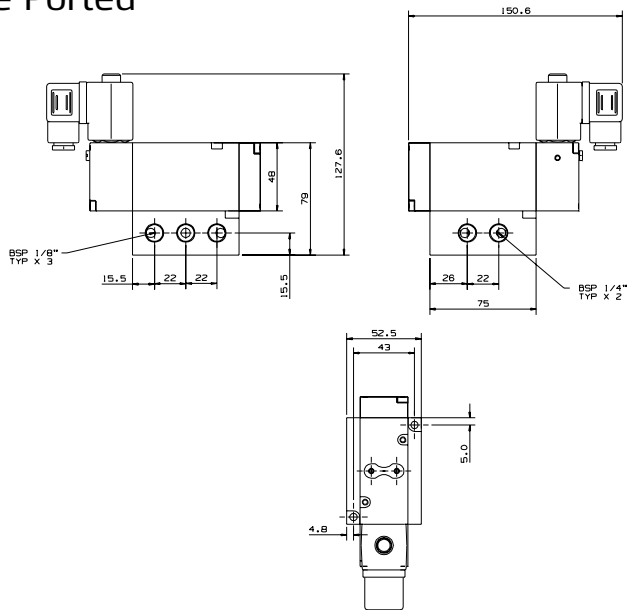
PNEUMATIC VALVES | General Purpose

BC 1/4" Base Mounted Valves | Mechanical/Air/Solenoid Operated

BS | Single Base Mounted type | Side Ported



* Model is for demonstration purposes only
 ** All combinations of valves are available

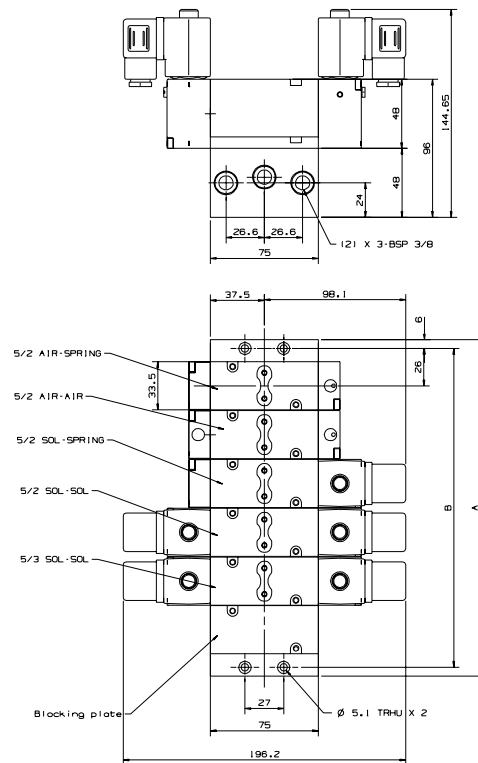
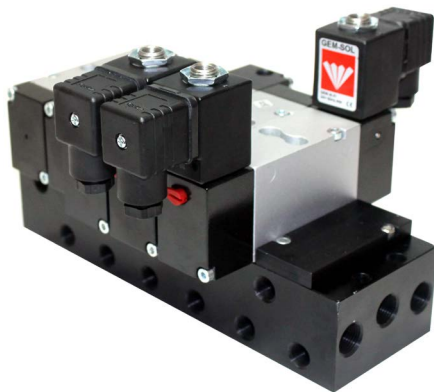


How to Order

BS

BC-BM | Manifold

No. of sections : 2-4-6-8-10-11



How to Order


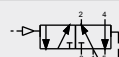
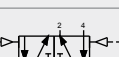
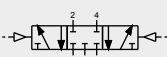
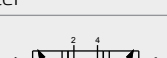

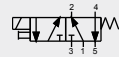
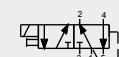
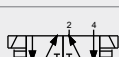


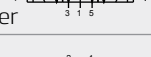
BC	-	BM	-	No. OF STATIONS
				2
				4
				6
				8
				10
				11

No. of stations	A (mm)	B (mm)
2	98	86
4	166	154
6	234	222
8	302	290
10	370	358
11	404	392

Manifold Specification Sheet

Manifold Model : BC-BM-□

Mark required stations with an "x"

VALVE DESCRIPTION	* STATIONS					
	2	4	6	8	10	11
Air-Spring 						
Air-Dif 						
Air-Air 						
Air-Air 3 Position Closed Center 						
Air-Air 3 Position Exhaust Center 						
Air-Air 3 Position Pressure Center 						
Sol-Spring 						
Sol-Dif 						
Sol - Sol 						
Sol - Sol 3 Position Closed Center 						
Sol-Sol 3 Position Exhaust Center 						
Sol-Sol 3 Position Pressure Center 						

* Station No.1 starts from the left side of the manifold