

PNEUMATIC VALVES | General Purpose

BC 1/4" Body Ported Valves

BC Series

- 5 port valves - mechanical, air and solenoid
- 3 port (only Sol-Spring)
- Port size : 1/4" BSP
- Can be used as an independent valve or installed on a manifold.



Lever-Protoc Panel Mounting



Sol-Sol



NAMUR type Air-Spring



Sol-Spring Return



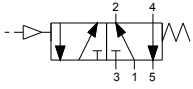
Manifold

Technical Data

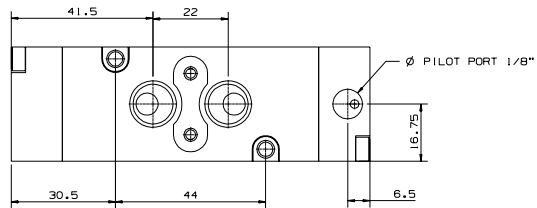
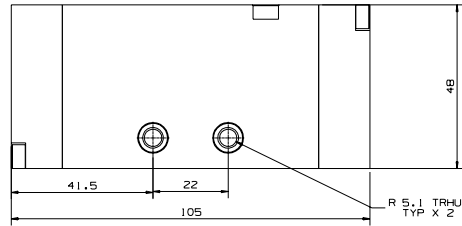
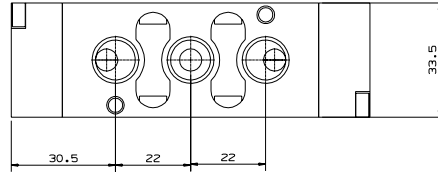
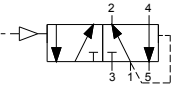
Fluid	Air / Inert gas
Operation pressure	1.5 to 10 bar
Ambient temperature	-5° to 55° C (option for FKM seals) up to 150° C
Lubrication	Not required (use turbine oil class ISO VG32 if lubricated)
Port size	1/4" BSP
Flow rate (Air)	1,100 L/min (at 5.5 bar)

BC 1/4" Body Ported Valves | Air Operated

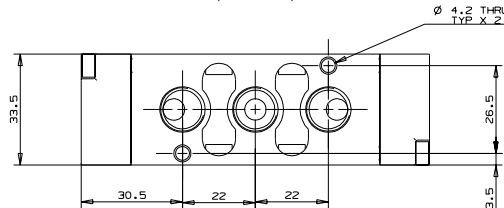
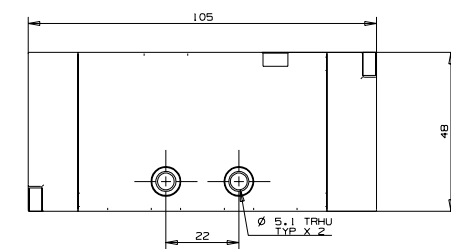
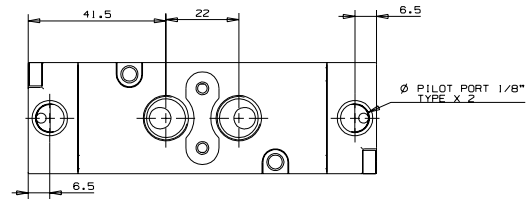
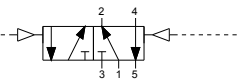
BCA5-S | Air-Spring



BCA5-DF | Air-Differential



BDA5-D | Air-Air



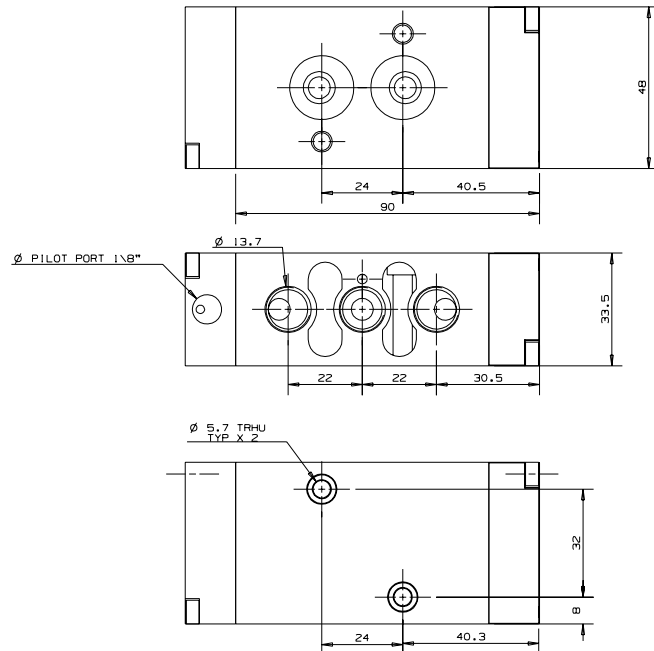
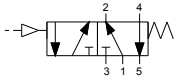
How to Order

BCA5	-	TYPE
		Air-Spring S
		Air-Dif DF
		Air-Air D

PNEUMATIC VALVES | General Purpose

BC 1/4" Body Ported Valves | Air Operated

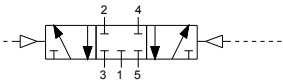
BCA-N | NAMUR type Air-Spring



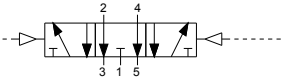
How to Order

BCA - N - S

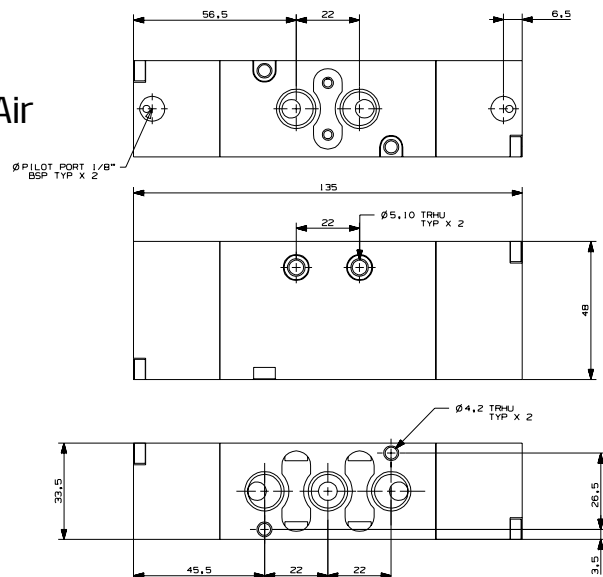
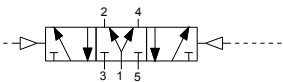
BCA5-P | 3 Position Closed Center Air-Air



BCA5-U | 3 Position Exhaust Center Air-Air



BCA5-Y | 3 Position Pressure Center Air-Air



How to Order

BCA5 - FUNCTION

Closed Center	P
Exhaust Center	U
Pressure Center	Y