

PNEUMATIC VALVES | General Purpose

BC 1/4" Body Ported Valves

BC Series

- 5 port valves - mechanical, air and solenoid
- 3 port (only Sol-Spring)
- Port size : 1/4" BSP
- Can be used as an independent valve or installed on a manifold.



Lever-Protoc Panel Mounting



Sol-Sol



NAMUR type Air-Spring



Sol-Spring Return



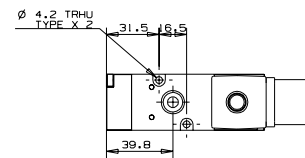
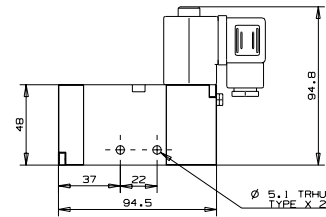
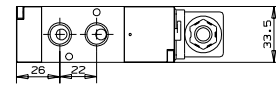
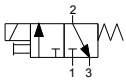
Manifold

Technical Data

Fluid	Air / Inert gas
Operation pressure	1.5 to 10 bar
Ambient temperature	-5° to 55° C (option for FKM seals) up to 150° C
Lubrication	Not required (use turbine oil class ISO VG32 if lubricated)
Port size	1/4" BSP
Flow rate (Air)	1,100 L/min (at 5.5 bar)

BC 1/4" Body Ported Valves | Solenoid Operated

BCS3 | Sol-Spring

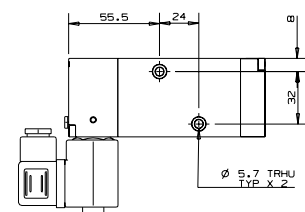
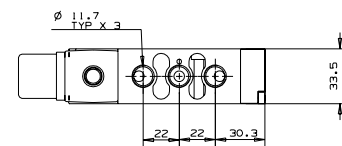
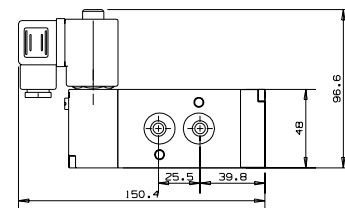
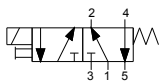


How to Order

BCS3	FUNCTION	MANUAL OVERRIDE	COIL VOLTAGE	POWER	CONNECTOR
NC	1	None	0	without	0
NO	2	Plastic	1	6	1
		Brass slot	2 ⁽¹⁾	12	2
		non-locking	3 ⁽¹⁾	24	3
		St.st knob	48	4	AC
		locking	5 ⁽¹⁾	110	5
		St.st knob	120	6	DC 10W
			230	7	3
			240	8	without
			other	9	with 1/2" hub

(1) Special order

BCS-N | NAMUR type Sol-Spring



How to Order

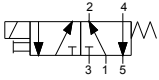
BCS	N	MANUAL OVERRIDE	COIL VOLTAGE	POWER	CONNECTOR
		None	0	without	0
		Plastic	1	6	1
		Brass slot	2 ⁽¹⁾	12	2
		non-locking	3 ⁽¹⁾	24	3
		St.st knob	48	4	AC
		locking	5 ⁽¹⁾	110	5
		St.st knob	120	6	DC 10W
			230	7	3
			240	8	without
			other	9	with 1/2" hub

(1) Special order

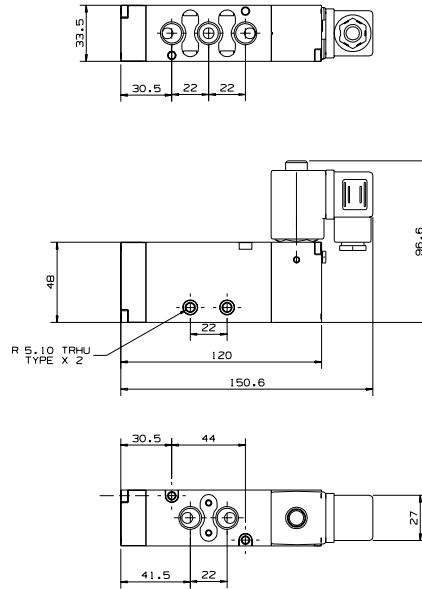
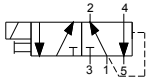
PNEUMATIC VALVES | General Purpose

BC 1/4" Body Ported Valves | Solenoid Operated

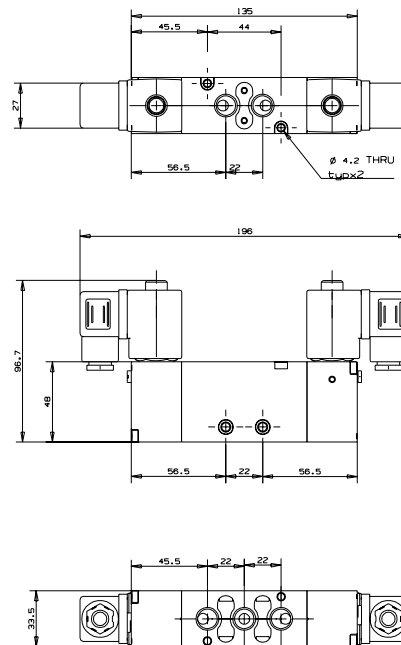
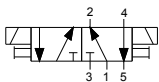
BCS5-S | Sol-Spring Return



BCS5-DF | Sol-Differential



BCS5-D | Sol-Sol



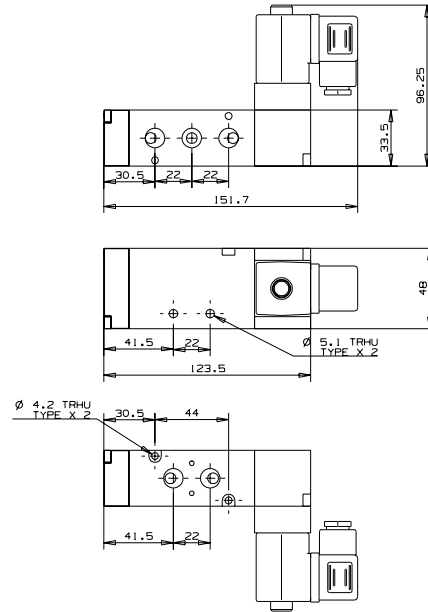
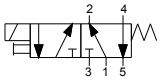
How to Order

BCS5	TYPE	MANUAL OVERRIDE	COIL VOLTAGE	POWER	CONNECTOR
Sol-Spring	S	None	0	without	0
Sol-Dif	DF	Plastic	1	6	1
Sol-Sol	D	Brass slot	2 ⁽¹⁾	12	2
		non-locking	3 ⁽¹⁾	24	3
		St.st knob	4 ⁽¹⁾	48	4
		locking	5 ⁽¹⁾	110	5
		St.st knob	6 ⁽¹⁾	120	6
			7	230	7
			8	240	8
			9	other	9

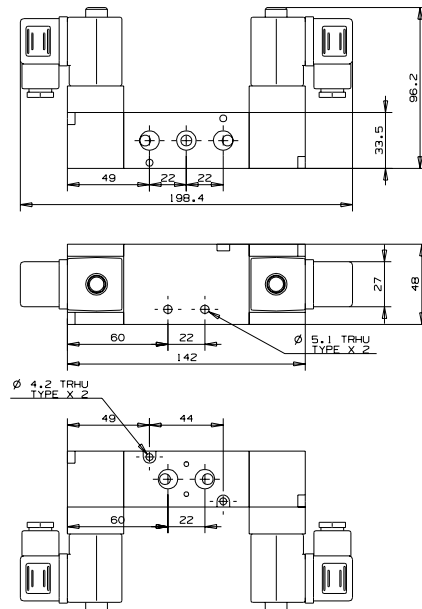
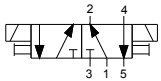
(1) Special order

BC 1/4" Body Ported Valves | Solenoid Operated

BCS5-90S | Coil position 90° Sol-Spring



BCS5-90D | Coil position 90° Sol-Sol



How to Order

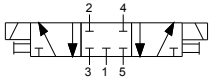
BCS5	-	90□	-	MANUAL OVERRIDE	-	COIL VOLTAGE	-	POWER	-	CONNECTOR	
		Sol-Spring	S	None	0	without	0	none	0	without	0
		Sol-Sol	D	Plastic	1	6	1	AC		standard	1
				Brass slot	2 ⁽¹⁾	12	2	8W50Hz	1	with LED	2
				non-locking	3 ⁽¹⁾	24	3	AC		with LED	
				St.st knob	48	4	4	8W60Hz	2	+ surge	3
				locking	110	5	5	DC 10W	3	protection	
				St.st knob	120	6	6			with 1/2"	
					230	7	7			hub	4
					240	8	8				
					other	9	9				

(1) Special order

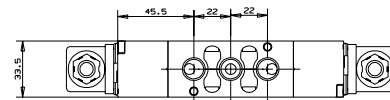
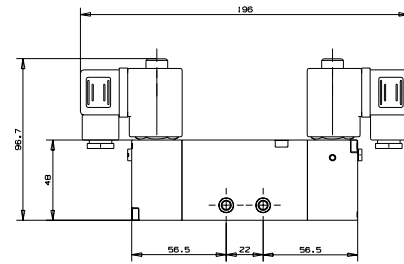
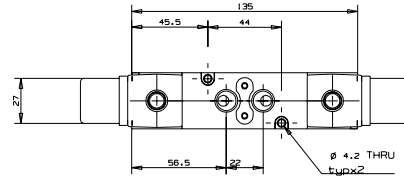
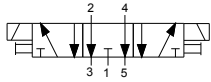
PNEUMATIC VALVES | General Purpose

BC 1/4" Body Ported Valves | Solenoid Operated

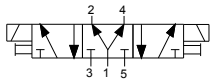
BCS53-P | 3 Position Closed Center Sol-Sol



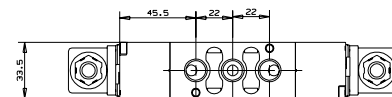
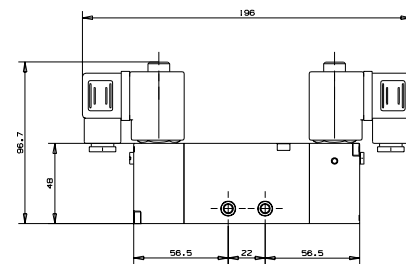
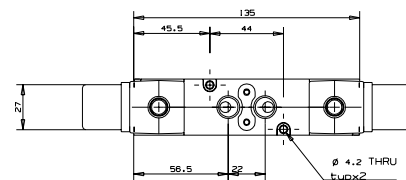
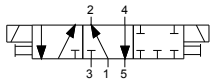
BCS53-U | 3 Position Exhaust Center Sol-Sol



BCS53-Y | 3 Position Pressure Center Sol-Sol



BCS53-A | 3 Position Shelf Control Sol-Sol



How to Order

BCS53	FUNCTION	MANUAL OVERRIDE	COIL VOLTAGE	POWER	CONNECTOR		
	Closed Center	None	0	without	0		
	Center	P	1	6	AC	without	
	Exhaust Center	U	2 ⁽¹⁾	12	2	8W50Hz	1
	Center	Brass slot	24	3	AC	with LED	2
	Pressure Center	non-locking	48	4	8W60Hz	with LED + surge protection	3
	Center	St.st knob	110	5	DC 10W		3
	Shelf Control	locking	120	6		with 1/2" hub	4
	Control	St.st knob	230	7			
			240	8			
			other	9			

(1) Special order